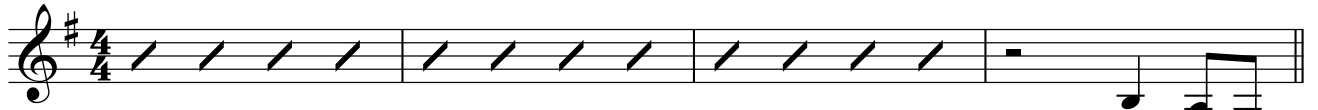


Groot is U Heer



Gillaume & René Louw/Nuwe Lof

♩ = 128 G



1.Groot is U

5 G C/G G

Heer, reg- ver - dig en ge - trou. U wat be -

9 C/G Em Dsus

lof - tes hou van Wie U is. 2.Groot is U

13 G C/G G

Heer, ge-klee in ma - jes - teit. U won - ders

17 C/G Em Dsus G/B

spreek deur tyd van Wie U is. So ek sal U loof,

Chorus

21 C G D G/B

— vir e - wig sing van U goed - heid. Ja ek sal U loof,

25 C Em D G/B

ver-won - der deur U groot - heid. Ek sal U loof,

29 C G D G/B

vir e - wig sing van U goed - heid. Ja ek sal U loof,

33 C Em D

ver-won - der deur U groot - heid. Groot is U

Interlude

37 C G D

Heer! Groot is U

41 C G D

Heer! 3.Groot is U

45 G C/G G

Heer, U gaan voor ons uit. In barm -

49 C/G Em D G/B

har - tig - heid dis Wie U is. So ek sal U loof,

Chorus

53 C G D G/B


vir e - wig sing van U goed - heid. Ja ek sal U loof,

57 C Em D G/B


ver-won - der deur U groot - heid. Ek sal U loof,

61 C G D G/B

vir e - wig sing van U goed - heid. Ek sal U loof,

65 C Em D

 ver-won - der deur U groot - heid. U

Bridge

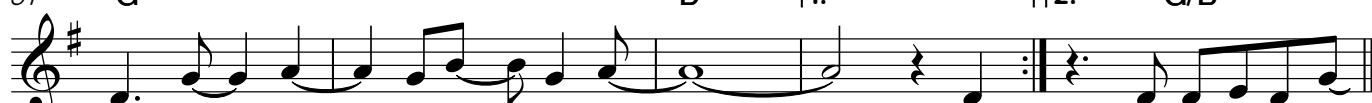
69 C Em

 heer - skap - py staan vas, U ko - nin - kryk, die mag. Die

73 G D

 heer - lik - heid be - hoort aan U. Ge -

77 Am⁷ Em

 slag - te wat ge - tuig die skep - ping wat saam juig. Die

81 G D 1. 2. G/B

 heer - lik - heid be - hoort aan U. (U) So ek sal U loof

Chorus

86 C G D G/B

 vir e - wig sing van U goed - heid. Ek sal U loof,

90 C Em D G/B

 ver-won - der deur U groot - heid. Ja ek sal U loof,

94 C G D G/B

 vir e - wig sing van U goed - heid. Ek sal U loof,

98 C Em D

 ver-won - der deur U groot - heid.

Tag

101 C Em DSus

Groot is die Heer, groot is die Heer.

Detailed description: This block contains the first line of music, measures 101 to 104. It is written on a single treble clef staff with a key signature of one sharp (F#). The melody consists of quarter notes: G4, A4, B4, C5 in the first measure; G4, A4, B4, C5 in the second measure; G4, A4, B4, C5 in the third measure; and G4, A4, B4, C5 in the fourth measure. Chord symbols C, Em, and DSus are placed above the staff. The lyrics 'Groot is die Heer, groot is die Heer.' are written below the staff.

105 Am C Em DSus

Groot is die Heer, groot is die Heer.

Detailed description: This block contains the second line of music, measures 105 to 108. It is written on a single treble clef staff with a key signature of one sharp (F#). The melody consists of quarter notes: G4, A4, B4, C5 in the first measure; G4, A4, B4, C5 in the second measure; G4, A4, B4, C5 in the third measure; and G4, A4, B4, C5 in the fourth measure. Chord symbols Am, C, Em, and DSus are placed above the staff. The lyrics 'Groot is die Heer, groot is die Heer.' are written below the staff.

109 C

Groot is die Heer!

Detailed description: This block contains the third line of music, measure 109. It is written on a single treble clef staff with a key signature of one sharp (F#). The melody consists of quarter notes: G4, A4, B4, C5. A final C chord symbol is placed above the staff. The lyrics 'Groot is die Heer!' are written below the staff.